

**7.1.1. Measures Initiated by the Institution for the promotion of gender equity during the last five years**

➤ **Facilities provided for student**

**INDEX**

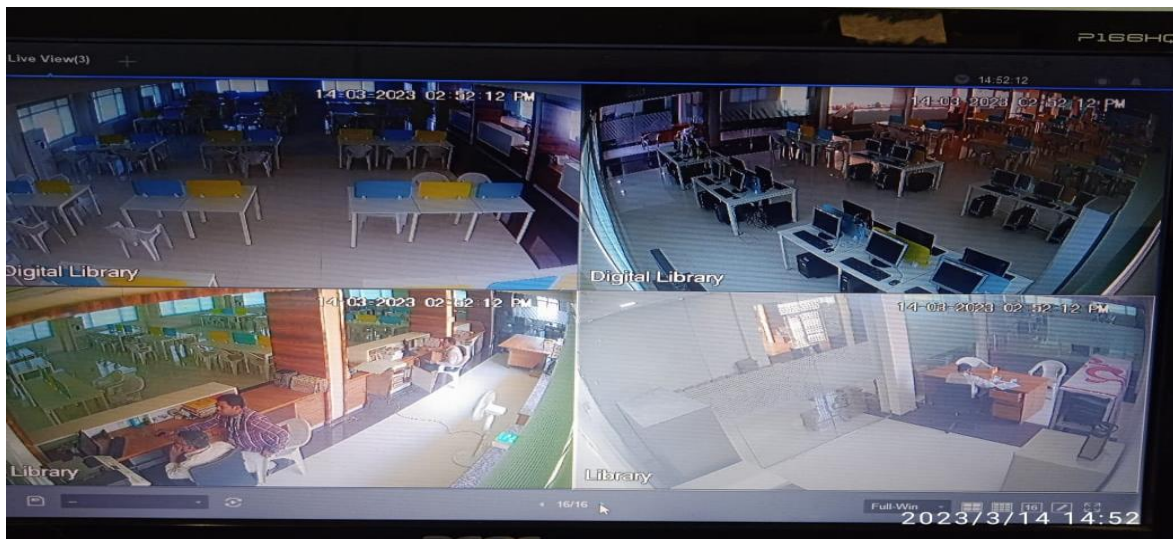
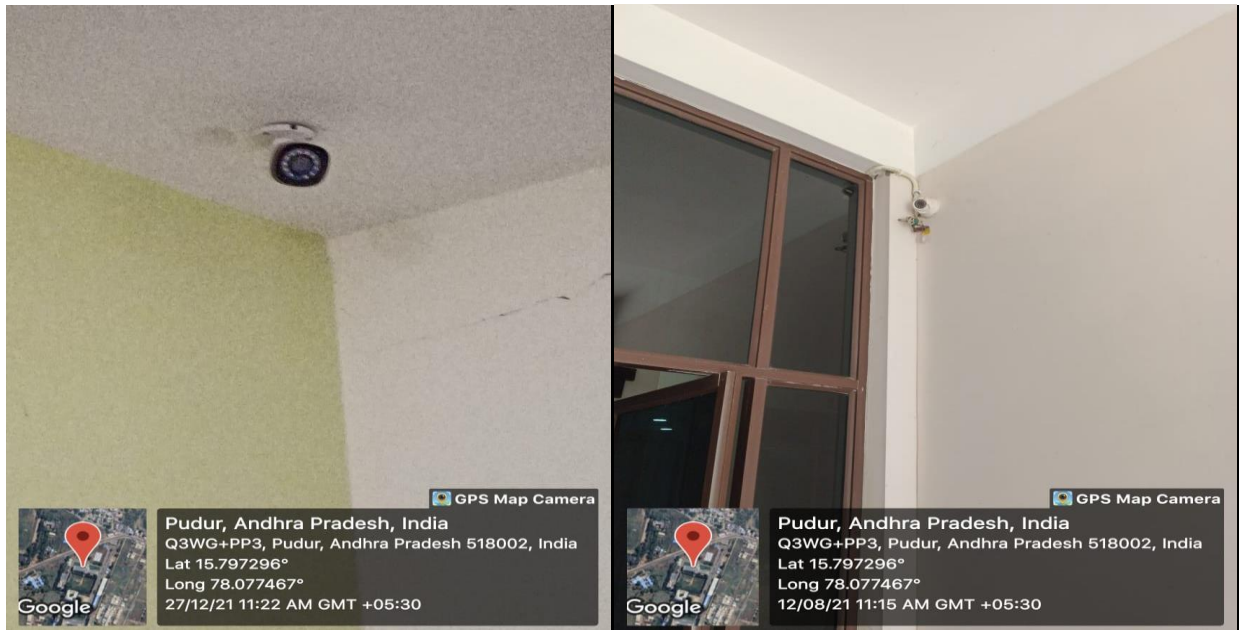
SI. No.	Facilities	Contents
1	Safety and Security (CC cameras Fire extinguisher, Dos and Don'ts boards, anti-ragging boards, security point)	Reports
		Photos
2	Counseling Cell (Counseling room photos with counselor and students Photos)	Reports
		Photos
3.	Common Room	Reports
		Photos
4.	Medical Room	Reports
		Photos

### 7.1.1 Specific Facilities provided for the students in terms of:

#### **a) Safety and Security:**

GPCET is highly committed to provide a safe and secured environment for all the stakeholders to function in an environment which is free from abuse and ragging. The Institute is highly committed to provide a zero-tolerance zone for nagging and ensure fundamental rights for all its stakeholders. The following are initiatives that the institute has taken up to ensure safety and security for all the stakeholders.

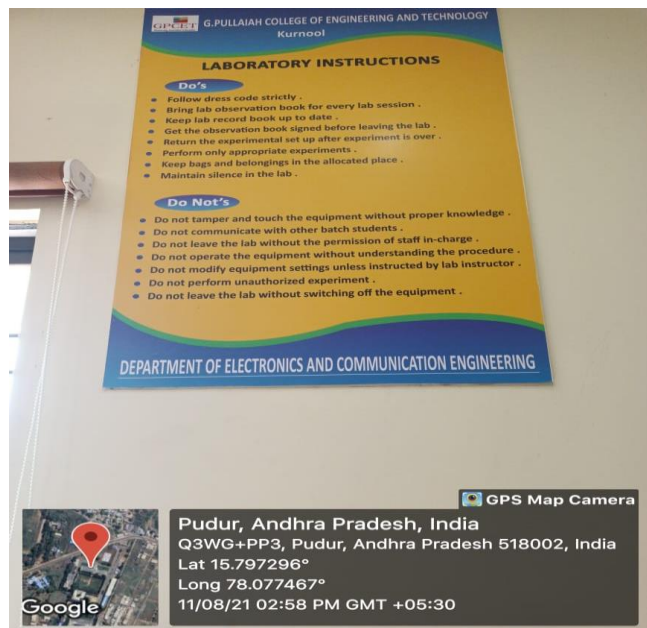
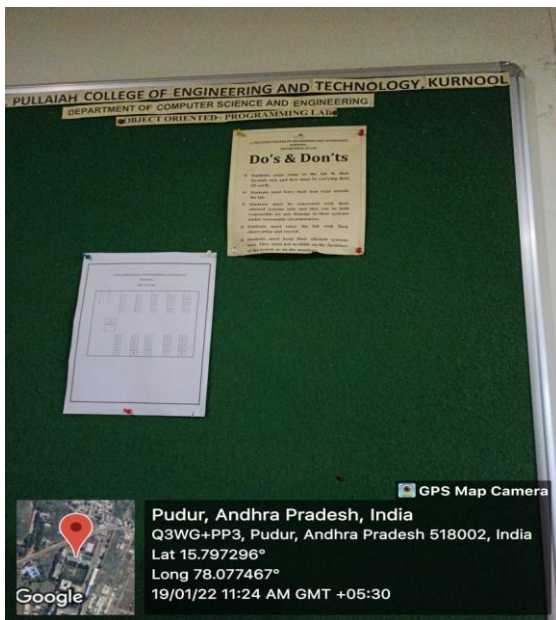
1. Well trained security personnel, who are highly committed are deployed at prominent places in the institute for safety and security of students and staff.
2. Wearing of Identity (ID) cards has been mandatory for all the staff and students. No one is allowed to enter the campus without a valid identity card.
3. Continuous CC TV monitoring has been ensured in the campus and hostels in order to prevent any unwanted incident.
4. Institute has a highly functional Anti-Ragging Cell which or conducts many awareness programs. Also, every stakeholder is made aware of the consequences of ragging through various awareness programs and posters that have been displayed across the campus.
5. An internal complaint committee has also been formed for the benefit of students and staff to look into various incidents relating to sexual harassment.
6. Ample space has been provided in the laboratories for the benefit of students along with display of Do's and Don'ts for the safety of students. Further the students are also emphasized to an end the laboratories in proper dress code.
7. Fire Extinguishers and First-Aid kits have been installed at prominent places to ensure the safety of all students and staff.
8. The institute regularly organizes various programs regarding women empowerment safety measures to the students so as to enable them face the challenges in the outside world.



**24x7 CC SURVEILLANCE THROUGH OUT THE CAMPUS**



## Fire extinguishers

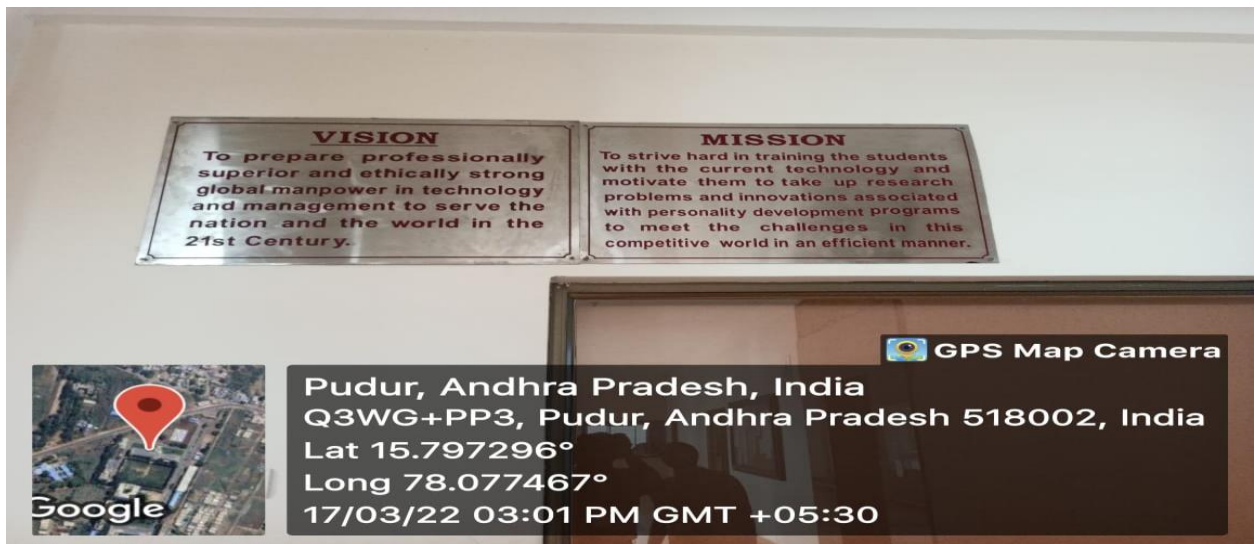


## Do's and Don'ts for the students





**Anti-Ragging Boards Security Point**



**Vision and Mission**



## Security Point



## **b) Counseling/Mentoring:**

Institute has effective student mentoring systems to take care of the psychological well-being of the students along with their academics. It is a well-known fact that the students require proper counseling/mentoring in order to guide them properly in their academics and other aspects. As a part of the above, a batch of 30 students is formed as group and a faculty is assigned to them as mentor. The mentor regularly interacts with the students on one-to-one basis and discusses with them their ideas, problems etc., and offers possible solutions to various issues.



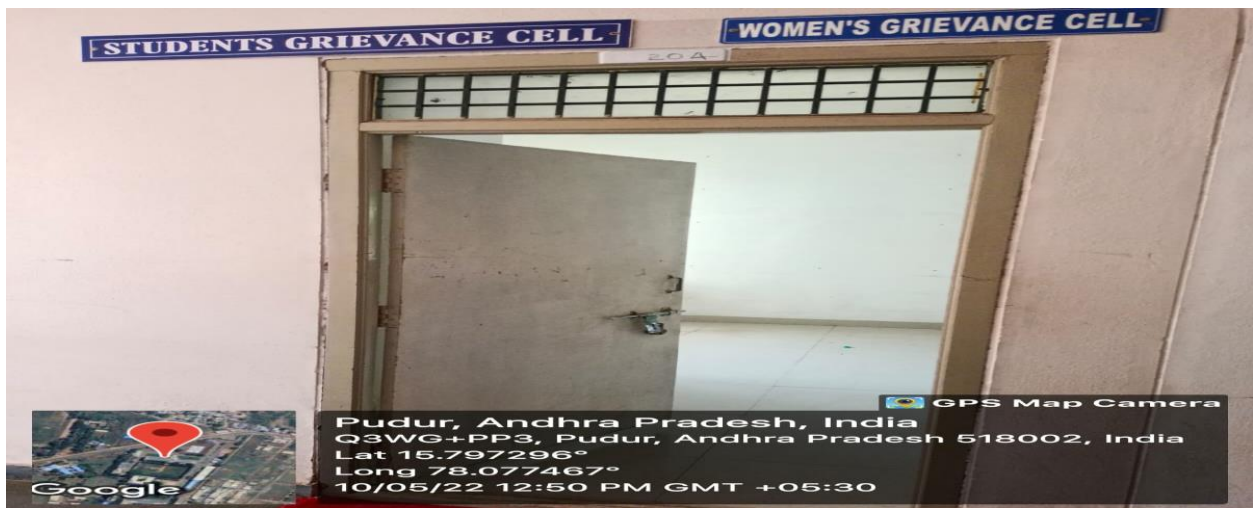


## Mentoring



### C) Common Room:

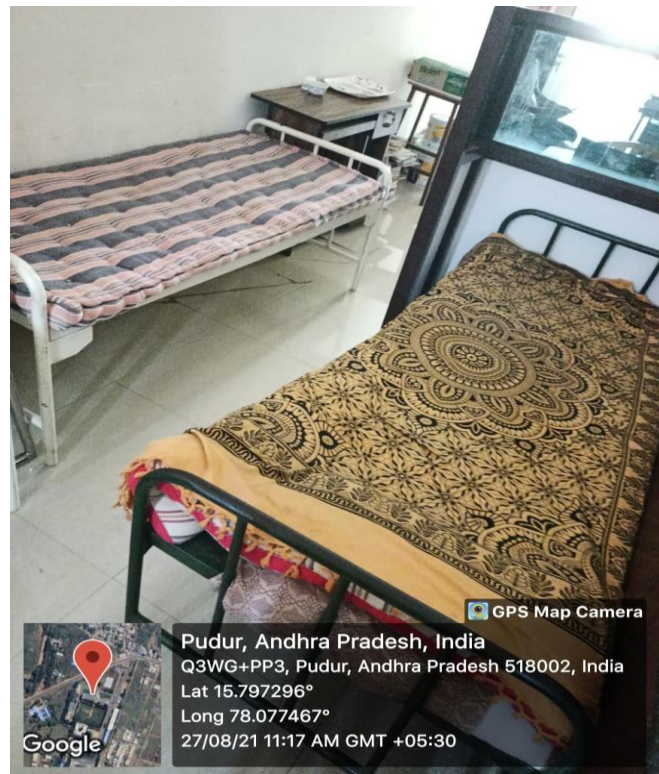
Institute has provided a common room for girls to take care of their special needs. The common room consists of various facilities in order to enable them to take rest whenever they wish to. A separate first aid box along with drinking water facility is also provided in the room for the benefit of the students



**Common room for Girls**

**d) Medical Aid Room:**

A separate medical aid room has been created with all the basic amenities (Doctor, Beds, First-aid kits, Drinking water facility) for the benefit of the students



**Health Center**